

EXPLANATION

COUNTY LINE

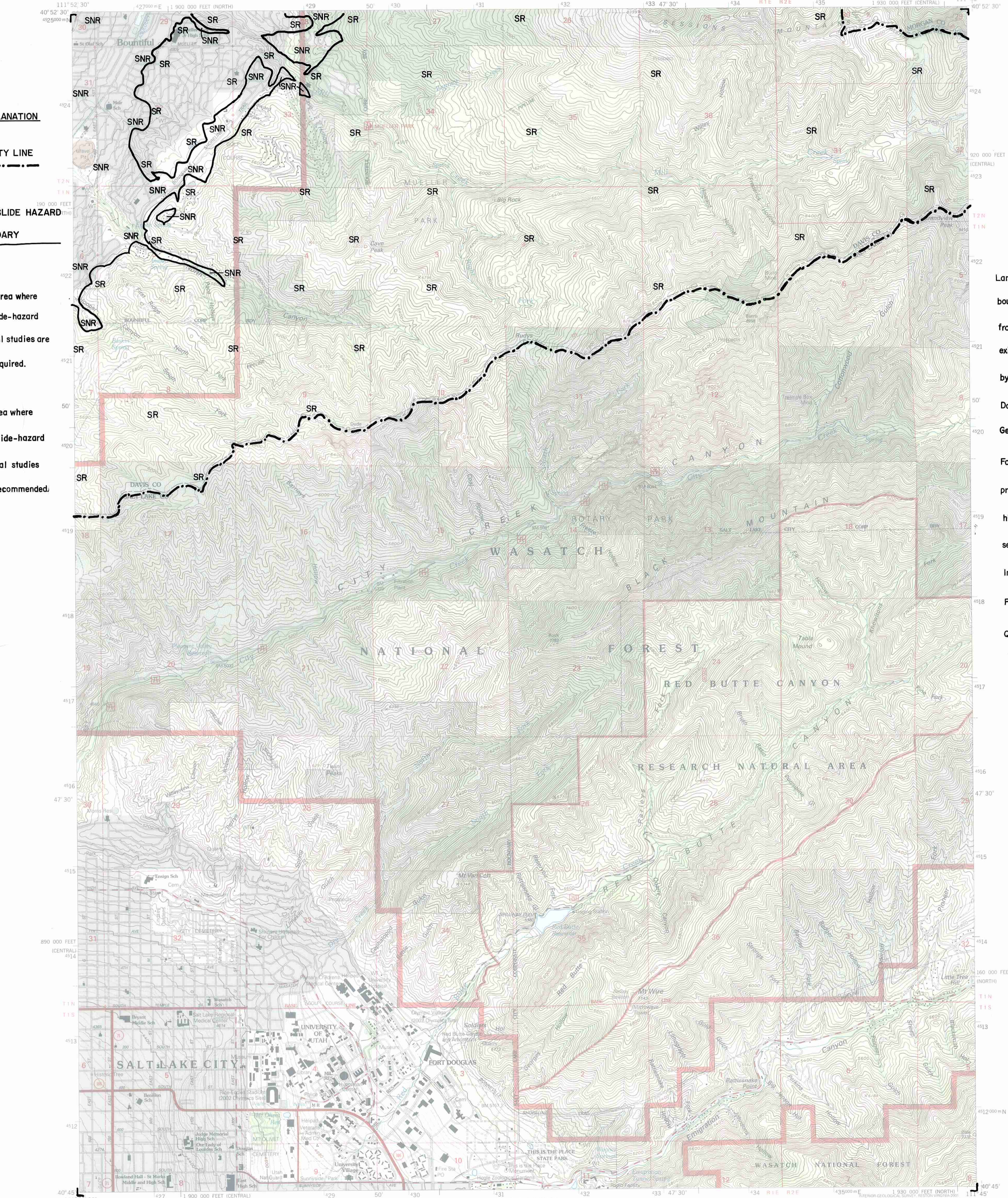
LANDSLIDE HAZARD

BOUNDARY

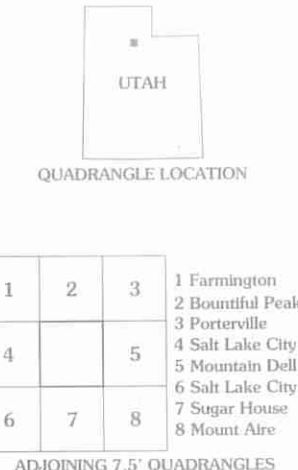
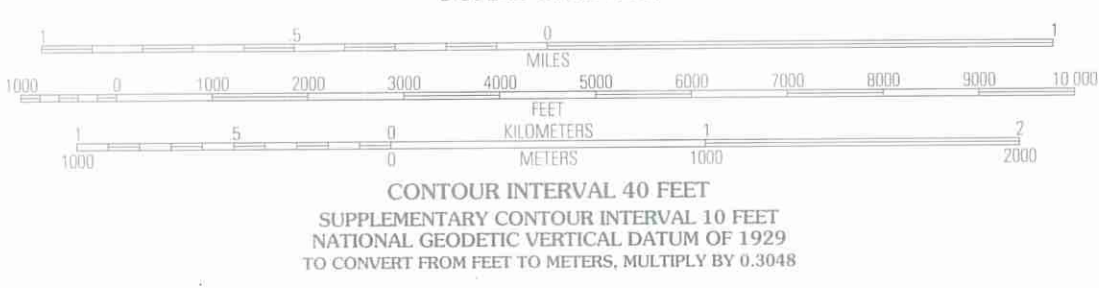
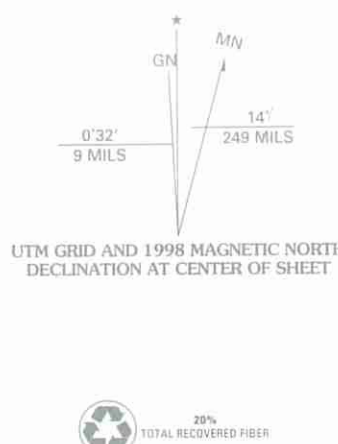
SNR - area where landslide-hazard special studies are not required.

SR - area where landslide-hazard special studies are recommended.

Landslide-hazard boundary compiled from slope and existing landslides by Mike Lowe, Davis County Geologist, 1989. For locations of prehistoric and historic landslides, see Slope-Failure Inventory Map - Fort Douglas Quadrangle.



Produced by the United States Geological Survey 1975
Revision by USDA Forest Service 1998
Topography compiled 1950. Planimetry derived from imagery taken 1997 and other sources. Public Land Survey System and survey control current as of 1998.
North American Datum of 1927 (NAD 27). Projection: Utah coordinate system, central zone (Lambert conformal conic)
10 000-foot ticks: Utah coordinate system central and north zones
Blue 1000-meter Universal Transverse Mercator ticks, zone 12
North American Datum of 1983 (NAD 83) is shown by dashed corner ticks
The values of the shift between NAD 27 and NAD 83 for 7.5-minute intersections are obtainable from National Geodetic Survey NADCON software
Non-National Forest System lands within the National Forest inholdings may exist in other National or State reservations
This map is not a legal land line or ownership document. Public lands are subject to change and leasing, and may have access restrictions; check with local offices. Obtain permission before entering private lands
Landmark buildings verified 2000



HIGHWAYS AND ROADS	
Interstate	Primary highway
U. S.	Secondary highway
State	Light-duty road
County	Composition: Unspecified...
National Forest, suitable for passenger cars	Paved
National Forest, suitable for high clearance vehicles	Gravel
National Forest Trail	Dirt
	Unimproved; 4 wheel drive
	Trail
	Gate; Barrier

THIS MAP COMPLIES WITH NATIONAL MAP ACCURACY STANDARDS
FOR SALE BY U.S. GEOLOGICAL SURVEY, P.O. BOX 25286, DENVER, COLORADO 80225
A FOLDER DESCRIBING TOPOGRAPHIC MAPS AND SYMBOLS IS AVAILABLE ON REQUEST

FORT DOUGLAS, UT
1998
NIMA 3665 IV SE-SERIES V897

