

DEBRIS-FLOW HAZARD SPECIAL STUDY ZONE MAP - BOUNTIFUL PEAK QUADRANGLE

BOUNTIFUL PEAK QUADRANGLE
UTAH
7.5 MINUTE SERIES (TOPOGRAPHIC)

UNITED STATES
DEPARTMENT OF THE INTERIOR
GEOLOGICAL SURVEY

EXPLANATION

COUNTY LINE

DEBRIS-FLOW HAZARD

SPECIAL STUDY ZONE

BOUNDARY

BOUNDARY OF DEBRIS

SLIDES, DEBRIS FLOWS,

AND YOUNGER HOLOCENE

(ACTIVE) ALLUVIAL FANS

SNR=area where debris-

flow special studies

are not required.

AF=younger Holocene

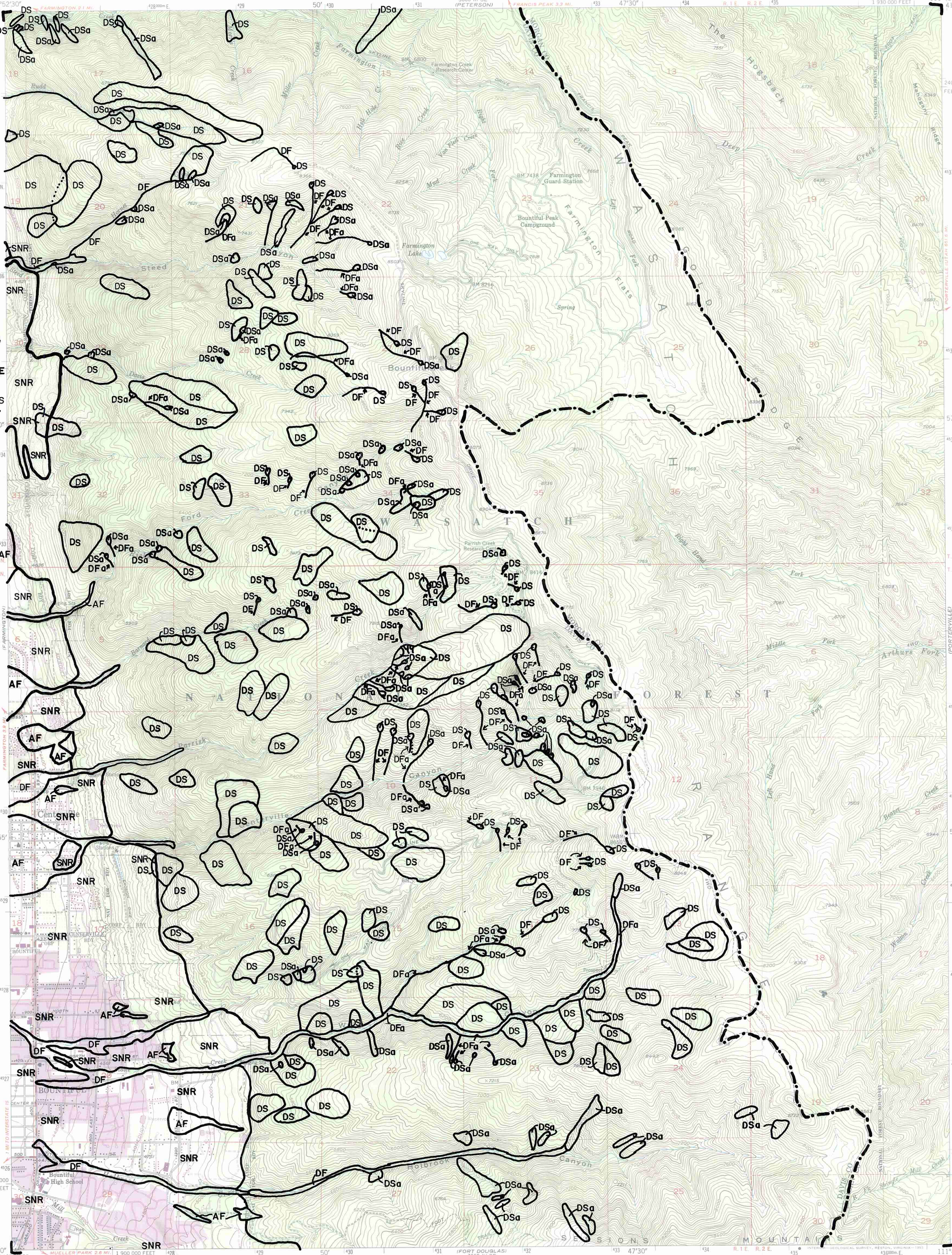
(active) alluvial fans.

DF=debris flow.

DS=debris slide.

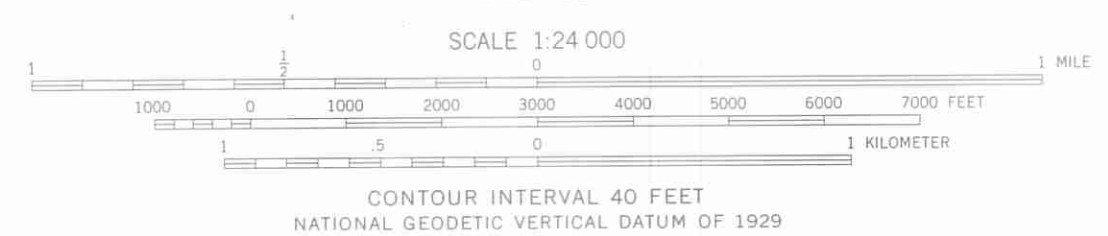
a=active (historic)

slope failure.



Alluvial-fan boundaries
compiled from
preliminary drafts
of surficial geologic
mapping by
A.R. Nelson and
S.F. Personius,
U.S. Geological Survey
by Mike Lowe,
Davis County
Geologist, 1989.
Sources of
slope-failure
mapping are
identified on
Slope-Failure
Inventory Map
Bountiful Peak
Quadrangle.

Produced by the United States Geological Survey
in cooperation with State of Utah
Control by USGS and NOS/NOAA
Compiled from aerial photographs taken 1950
Field checked 1952
North American Datum of 1927 (NAD 27). Projection and
10,000-foot grid ticks: Utah Coordinate System, north zone
(Lambert Conformal Conic). 1000-meter Universal Transverse
Mercator grid ticks, zone 12, shown in blue
The difference between NAD 27 and North American Datum of
1983 (NAD 83) for 7.5 minute intersections is given in USGS
Bulletin 1875. The NAD 83 is shown by dashed corner ticks
There may be private inholdings within the boundaries of the
National or State reservations shown on this map
Red tint indicates areas in which only landmark buildings are shown
Revisions shown in purple compiled from aerial photographs
taken 1969 and 1975. This information is not field checked
Purple tint indicates extension of urban areas



BOUNTIFUL PEAK, UTAH
40111-H7-TF-024

THIS MAP COMPLIES WITH NATIONAL MAP ACCURACY STANDARDS
FOR SALE BY U.S. GEOLOGICAL SURVEY, DENVER, COLORADO 80225, OR RESTON, VIRGINIA 22092
A FOLDER DESCRIBING TOPOGRAPHIC MAPS AND SYMBOLS IS AVAILABLE ON REQUEST

1952
PHOTOREVISED 1969 AND 1975
DMA 3665 IV NE-SERIES V897