

POTENTIAL SURFACE-FAULT RUPTURE SENSITIVE AREA OVERLAY ZONE - KAYSVILLE QUADRANGLE

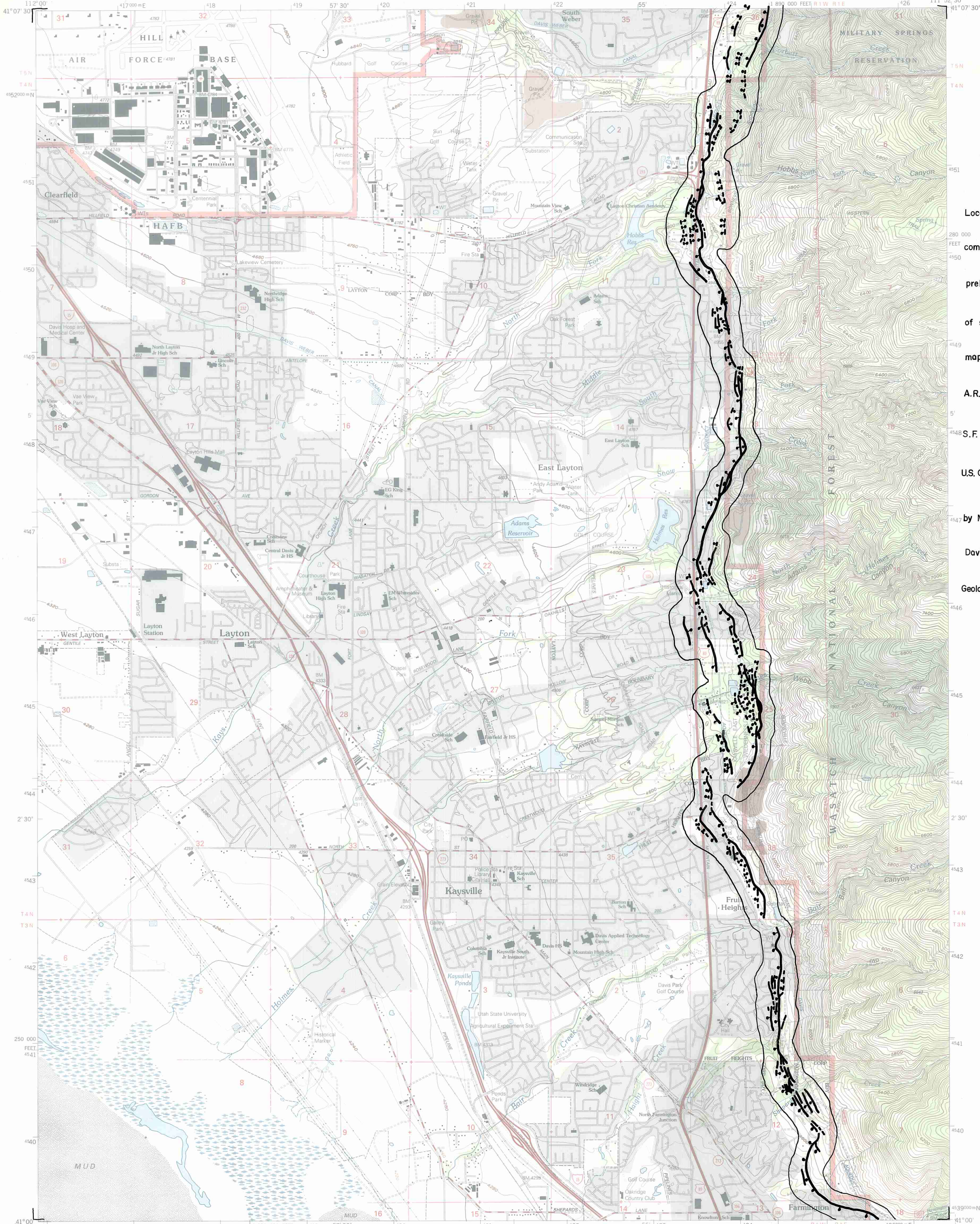


U.S. DEPARTMENT OF THE INTERIOR  
U.S. GEOLOGICAL SURVEY

EXPLANATION  
FAULT - ball on down-dropped side  
SENSITIVE AREA BOUNDARY -

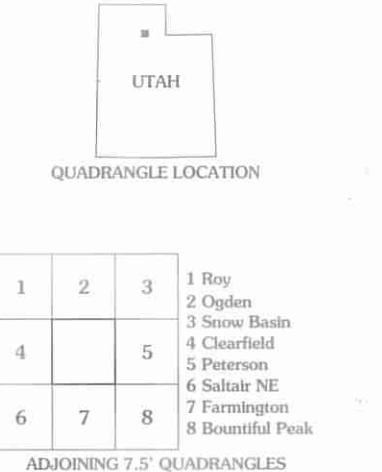
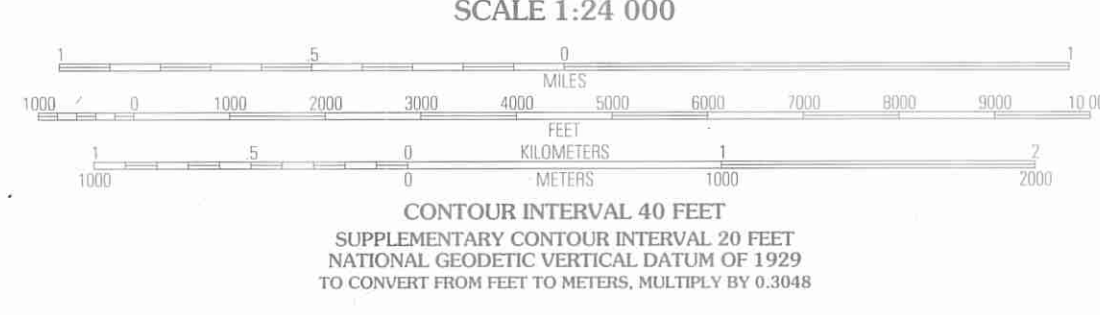
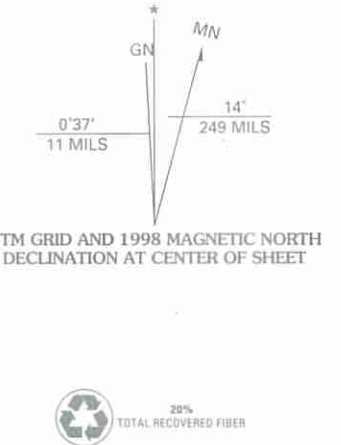
U.S. DEPARTMENT OF AGRICULTURE  
FOREST SERVICE

KAYSVILLE QUADRANGLE  
UTAH-DAVIS CO.  
7.5-MINUTE SERIES (TOPOGRAPHIC)



Location of faults  
compiled from  
preliminary drafts  
of surficial geologic  
mapping by  
A.R. Nelson and  
S.F. Personius,  
U.S. Geological Survey,  
by Mike Lowe,  
Davis County  
Geologist, 1989.

Produced by the United States Geological Survey 1992  
Revision by USDA Forest Service 1998  
Topography compiled 1953. Planimetry derived from imagery taken 1997 and other sources. Public Land Survey System and survey control current as of 1998.  
North American Datum of 1927 (NAD 27). Projection and 10 000-foot ticks: Utah coordinate system, north zone (Lambert conformal conic); Blue 1000-meter Universal Transverse Mercator ticks, zone 12.  
North American Datum of 1983 (NAD 83) is shown by dashed corner ticks. The values of the shift between NAD 27 and NAD 83 for 7.5-minute intersections are obtainable from National Geodetic Survey NADCON software.  
Non-National Forest System lands within the National Forest. Inholdings may exist in other National or State reservations.  
This map is not a legal land line or ownership document. Public lands are subject to change and leasing, and may have access restrictions; check with local offices. Obtain permission before entering private lands.  
Landmark buildings verified 2000.



HIGHWAYS AND ROADS

Interstate	Primary highway
U. S.	Secondary highway
State	Light-duty road
County	Composition: Unspecified...
National Forest, suitable for passenger cars	Paved
National Forest, suitable for high clearance vehicles	Gravel
National Forest Trail	Dirt
	Unimproved; 4 wheel drive
	Trail
	Gate; Barrier

THIS MAP COMPLIES WITH NATIONAL MAP ACCURACY STANDARDS  
FOR SALE BY U.S. GEOLOGICAL SURVEY, P.O. BOX 25286, DENVER, COLORADO 80225  
A FOLDER DESCRIBING TOPOGRAPHIC MAPS AND SYMBOLS IS AVAILABLE ON REQUEST

KAYSVILLE, UT  
1998  
NIMA 3666 III SW-SERIES B997

