

EXPLANATION

COUNTY LINE

LANDSLIDE BOUNDARY

DS=shallow failure, chiefly

debris slides grading

to debris flows

DF=debris flows, gradational

with debris slides

LS=deep failure, chiefly

slumps and earthflows

a= active (historic)

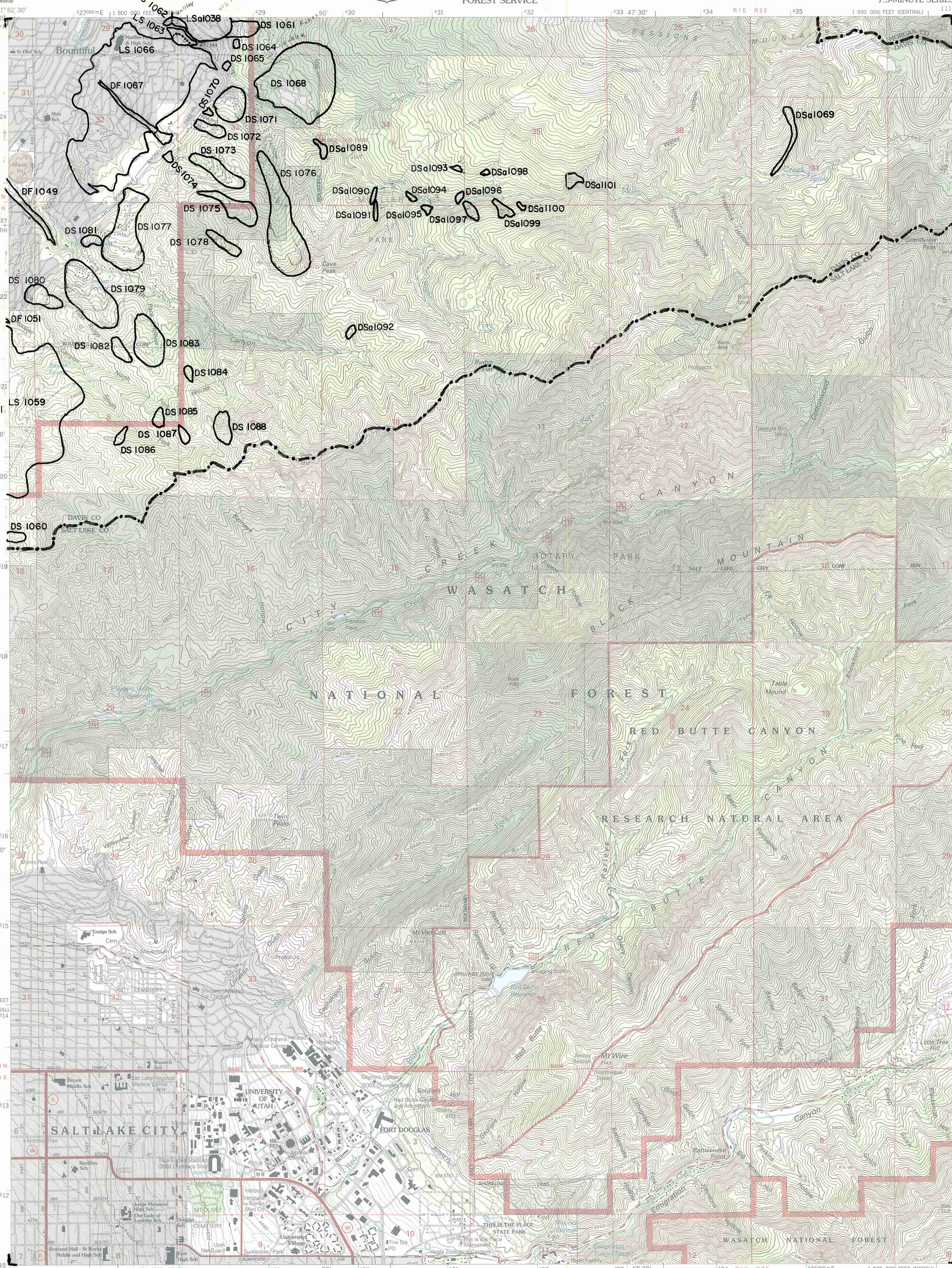
b=inactive, young

c= inactive, mature

d= inactive, old

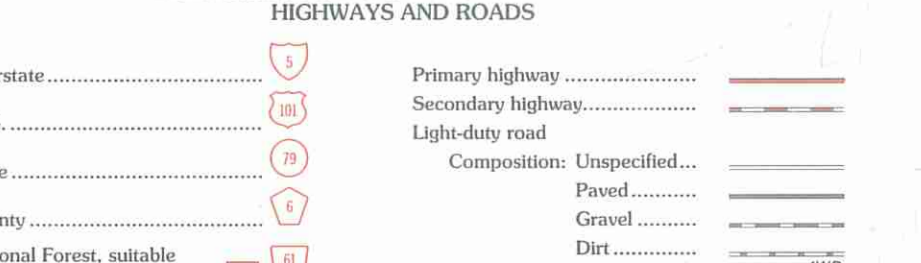
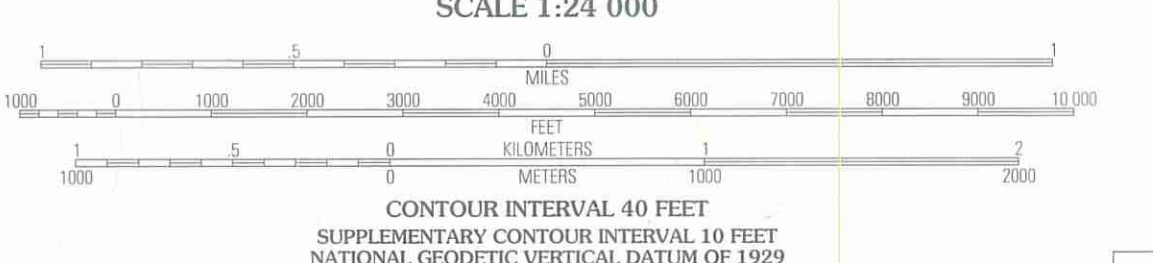
I23=inventory number

for slope failure



Slope failures
compiled from
original mapping
by
Bryant, 1984;
Entelek, 1975;
Kaiser, 1976;
Kappesser, unpublished;
Lowe, unpublished;
Miller, 1980;
Nelson and Personius,
in preparation;
and
Rogers, 1978,
by Mike Lowe,
Davis County
Geologist, 1989.

Produced by the United States Geological Survey 1975
Revision by USDA Forest Service 1998
Topography compiled 1950. Planimetry derived from imagery taken 1997 and other sources. Public Land Survey System and survey control current as of 1998
North American Datum of 1927 (NAD 27). Projection: Utah coordinate system, central zone (Lambert conformal conic)
10 000-foot ticks: Utah coordinate system central and north zones
Blue 1000-meter Universal Transverse Mercator ticks, zone 12
North American Datum of 1983 (NAD 83) is shown by dashed corner ticks
The values of the shift between NAD 27 and NAD 83 for 7.5-minute intersections are obtainable from National Geographic Survey NADCON software
Non-National Forest System lands within the National Forest
Inholdings may exist in other National or State reservations
This map is not a legal land line or ownership document. Public lands are subject to change and leasing, and may have access restrictions; check with local offices. Obtain permission before entering private lands
Landmark buildings verified 2000



1	2	3
4	5	6
7	8	

1 Farmington
2 Bountiful Peak
3 Porterville
4 Salt Lake City North
5 Mountain Dell
6 Salt Lake City South
7 Sugar House
8 Mount Aie

FORT DOUGLAS, UT
1998
NIMA 3665 IV SE-SERIES V897

