

LANDSLIDE HAZARD MAP - KAYSVILLE QUADRANGLE



U.S. DEPARTMENT OF THE INTERIOR  
U.S. GEOLOGICAL SURVEY



U.S. DEPARTMENT OF AGRICULTURE  
FOREST SERVICE

KAYSVILLE QUADRANGLE  
UTAH-DAVIS CO.  
7.5-MINUTE SERIES (TOPOGRAPHIC)

EXPLANATION

LANDSLIDE-HAZARD

BOUNDARY

Area where

landslide-hazard

studies are

required.

Area where

landslide-hazard

studies

recommended.

Landslide-hazard

map compiled

from slope and

existing landslides

by Mike Lowe,

Davis County

Geologist, 1989.

For locations of

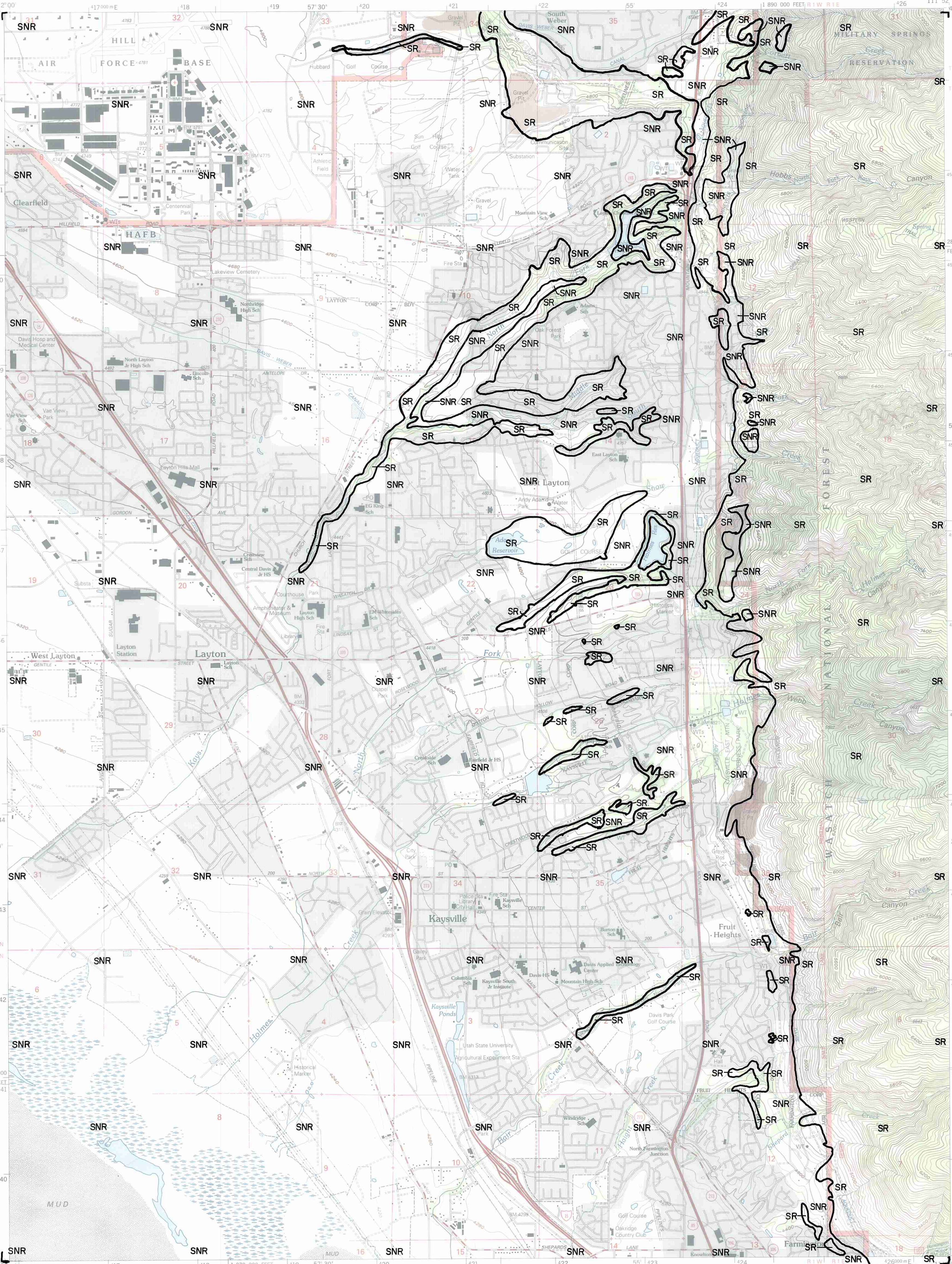
prehistoric and

historic landslides,

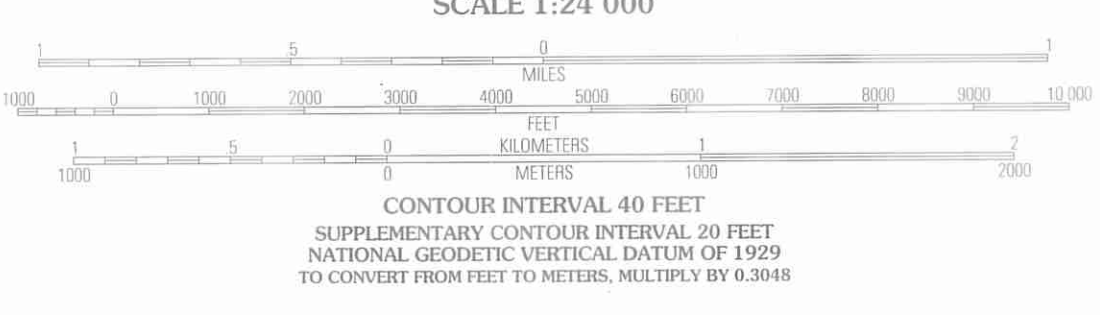
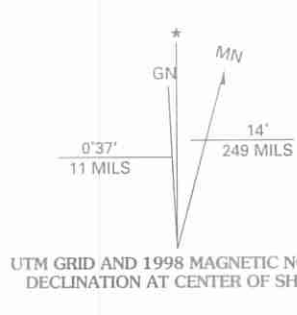
see Slope-Failure

Inventory Map -

Kaysville Quadrangle.



Produced by the United States Geological Survey 1992  
Revision by USDA Forest Service 1998  
Topography compiled 1953. Planimetry derived from imagery taken 1997  
and other sources. Public Land Survey System and survey control current  
as of 1998  
North American Datum of 1927 (NAD 27). Projection and 10 000-foot ticks  
Utah coordinate system, north zone (Lambert conformal conic)  
Blue 1000-meter Universal Transverse Mercator ticks, zone 12  
North American Datum of 1983 (NAD 83) is shown by dashed corner ticks  
The values of the shift between NAD 27 and NAD 83 for 7.5-minute  
intersections are obtainable from National Geodetic Survey NADCON software  
[ ] Non-National Forest System lands within the National Forest  
[ ] Holdings may exist in other National or State reservations  
This map is not a legal land line or ownership document. Public lands are  
subject to change and leasing, and may have access restrictions; check  
with local offices. Obtain permission before entering private lands  
Landmark buildings verified 2000



ADJOINING 7.5' QUADRANGLES

1	2	3
4	5	6
7	8	

1 Roy  
2 Ogden  
3 Snow Basin  
4 Clearfield  
5 Peterson  
6 Saltair NE  
7 Farmington  
8 Beautiful Peak

Interstate	5	Primary highway	—————
U. S.	161	Secondary highway	—————
State	19	Light-duty road	—————
County	15	Composition: Unspecified	—————
National Forest, suitable for passenger cars	100	Paved	—————
National Forest, suitable for high clearance vehicles	101	Gravel	—————
National Forest Trail	104	Dirt	—————
		Unimproved; 4 wheel drive	4WD
		Trail	—————
		Gate; Barrier	—————

KAYSVILLE, UT  
1998  
NIMA 3666 III SW-SERIES V897

THIS MAP COMPLIES WITH NATIONAL MAP ACCURACY STANDARDS  
FOR SALE BY U.S. GEOLOGICAL SURVEY, P.O. BOX 25286, DENVER, COLORADO 80225  
A FOLDER DESCRIBING TOPOGRAPHIC MAPS AND SYMBOLS IS AVAILABLE ON REQUEST

