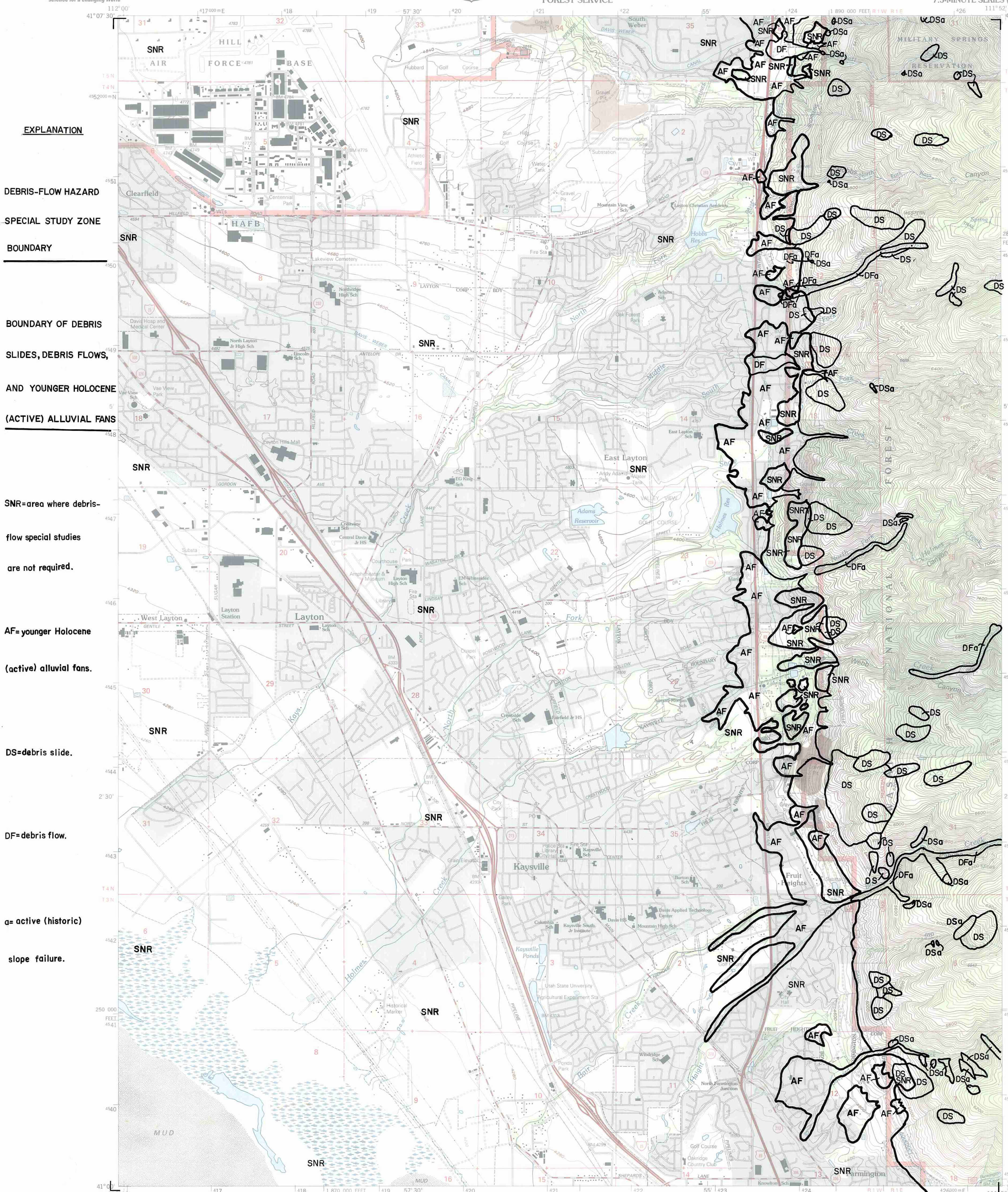


DEBRIS-FLOW HAZARD SPECIAL STUDY ZONE MAP - KAYSVILLE QUADRANGLE

EXPLANATION

- DEBRIS-FLOW HAZARD
- SPECIAL STUDY ZONE
- BOUNDARY
- BOUNDARY OF DEBRIS SLIDES, DEBRIS FLOWS, AND YOUNGER HOLOCENE (ACTIVE) ALLUVIAL FANS
- SNR=area where debris-flow special studies are not required.
- AF=younger Holocene (active) alluvial fans.
- DS=debris slide.
- DF=debris flow.
- a= active (historic) slope failure.

Alluvial-fan boundaries compiled from preliminary drafts of surficial geologic mapping by A.R. Nelson and S.F. Personius, U.S. Geological Survey, by Mike Lowe, Davis County Geologist, 1989. Sources of slope-failure mapping are identified on Slope-Failure Inventory Map - Kaysville Quadrangle.



Produced by the United States Geological Survey 1992
Revision by USDA Forest Service 1998

Topography compiled 1953. Planimetry derived from imagery taken 1997 and other sources. Public Land Survey System and survey control current as of 1998.

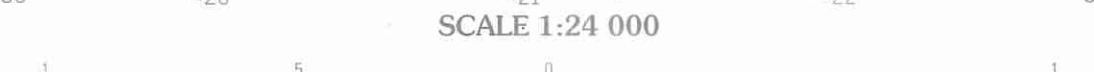
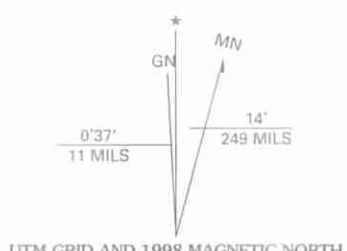
North American Datum of 1927 (NAD 27). Projection and 10 000-foot ticks: Utah coordinate system, north zone (Lambert conformal conic); Blue 1000-meter Universal Transverse Mercator ticks, zone 12

North American Datum of 1983 (NAD 83) is shown by dashed corner ticks. The values of the shift between NAD 27 and NAD 83 for 7.5-minute intersections are obtainable from National Geodetic Survey NADCON software

Non-National Forest System lands within the National Forest. Inholdings may exist in other National or State reservations

This map is not a legal land line or ownership document. Public lands are subject to change and leasing, and may have access restrictions; check with local offices. Obtain permission before entering private lands

Landmark buildings verified 2000



CONTOUR INTERVAL 40 FEET
SUPPLEMENTARY CONTOUR INTERVAL 20 FEET
NATIONAL GEODETIC VERTICAL DATUM OF 1999
TO CONVERT FROM FEET TO METERS, MULTIPLY BY 0.3048



1	2	3	1 Roy
			2 Opden
			3 Snow Basin
			4 Clearfield
4	5		5 Peterson
			6 Saltair NE
			7 Farmington
6	7	8	8 Bonanza Peak

Interstate	Primary highway	Secondary highway	Light-duty road
U. S.	Composition: Unspecified...	Paved	Gravel
State	County	Unimproved; 4 wheel drive	Trail
National Forest, suitable for passenger cars	National Forest, suitable for high clearance vehicles	National Forest Trail	Gate; Barrier

KAYSVILLE, UT
1998
NIMA 3666 III SW-SERIES V897

THIS MAP COMPLIES WITH NATIONAL MAP ACCURACY STANDARDS
FOR SALE BY U.S. GEOLOGICAL SURVEY, P.O. BOX 25286, DENVER, COLORADO 80225
A FOLDER DESCRIBING TOPOGRAPHIC MAPS AND SYMBOLS IS AVAILABLE ON REQUEST

