

DEBRIS-FLOW HAZARD SPECIAL STUDY ZONE MAP - FORT DOUGLAS QUADRANGLE

EXPLANATION

COUNTY LINE

DEBRIS-FLOW HAZARD SPECIAL STUDY ZONE BOUNDARY

BOUNDARY OF DEBRIS SLIDES, DEBRIS FLOWS, AND YOUNGER HOLOCENE (ACTIVE) ALLUVIAL FANS

SNR = area where debris-flow special studies are not required.

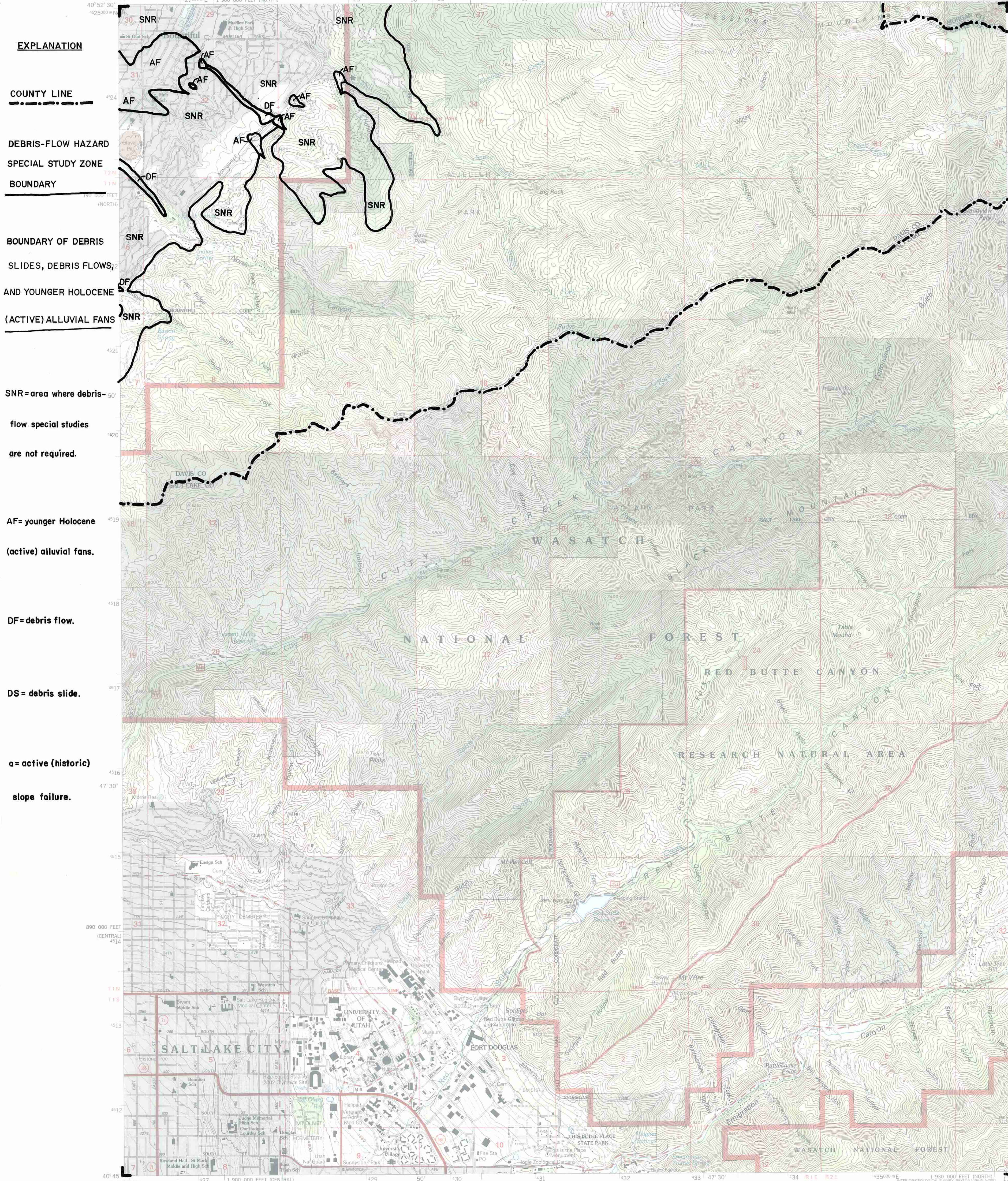
AF = younger Holocene (active) alluvial fans.

DF = debris flow.

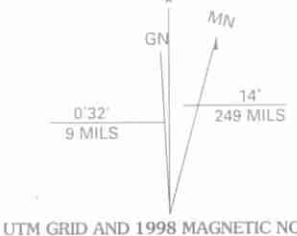
DS = debris slide.

a = active (historic) slope failure.

Alluvial-fan boundaries compiled from preliminary drafts of surficial geologic mapping by A. R. Nelson and S. F. Personius, U.S. Geological Survey, by Mike Lowe, Davis County Geologist, 1989. Sources of slope-failure mapping are identified on Slope-failure Inventory Map - Fort Douglas Quadrangle.



Produced by the United States Geological Survey 1975
Revision by USDA Forest Service 1998
Topography compiled 1950. Planimetry derived from imagery taken 1997 and other sources. Public Land Survey System and survey control current as of 1998.
North American Datum of 1927 (NAD 27). Projection: Utah coordinate system, central zone (Lambert conformal conic)
10 000-foot ticks: Utah coordinate system central and north zones
Blue 1000-meter Universal Transverse Mercator ticks, zone 12
North American Datum of 1983 (NAD 83) is shown by dashed corner ticks
The values of the shift between NAD 27 and NAD 83 for 7.5-minute intersections are obtainable from National Geodetic Survey NADCON software
Non-National Forest System lands within the National Forest
Inholdings may exist in other National or State reservations
This map is not a legal land line or ownership document. Public lands are subject to change and leasing, and may have access restrictions; check with local offices. Obtain permission before entering private lands
Landmark buildings verified 2000



CONTOUR INTERVAL 40 FEET
SUPPLEMENTARY CONTOUR INTERVAL 10 FEET
NATIONAL GEODETIC VERTICAL DATUM OF 1929
TO CONVERT FROM FEET TO METERS, MULTIPLY BY 0.3048



1	2	3	1 Farmington
			2 Bountiful Peak
			3 Peroville
4	5	4 Salt Lake City North	
		5 Mountain Dell	
		6 Salt Lake City South	
6	7	8	7 Sugar House
			8 Mount Aire

UTAH

Interstate

U. S.

State

County

National Forest, suitable for passenger cars

National Forest, suitable for high clearance vehicles

National Forest Trail

Primary highway

Secondary highway

Light-duty road

Composition: Unspecified

Paved

Gravel

Dirt

Unimproved; 4 wheel drive

Trail

Gate; Barrier

FORT DOUGLAS, UT
1998
NIMA 3665 IV SE-SERIES V897

